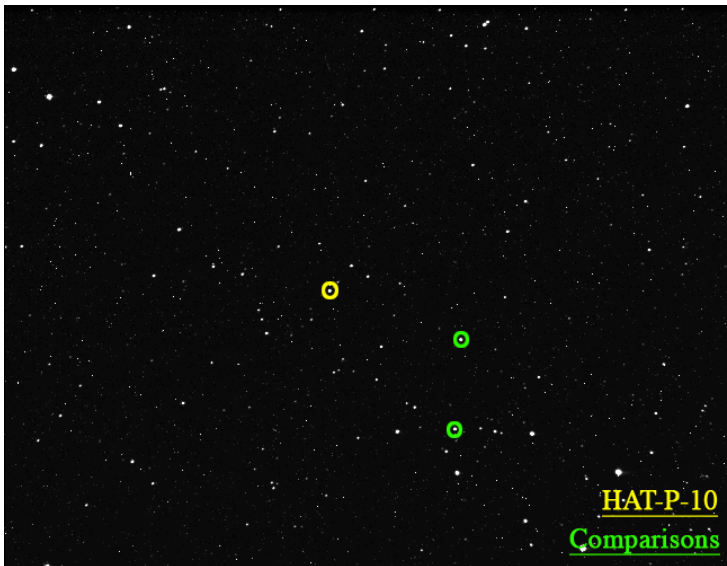


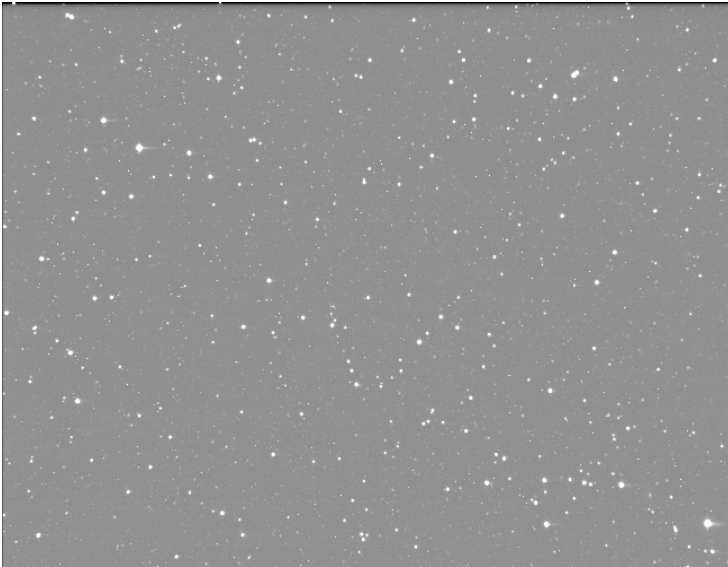
Can you find HATP-10?
Hone your star finding ability

Compare this image with the star chart. Can you find HATP-10?

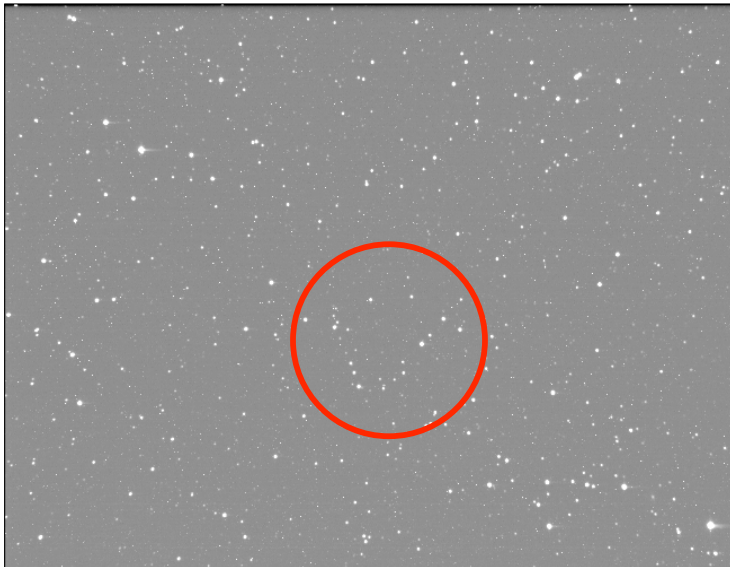


Having trouble? The stars are here but faint and just about invisible. Always remember to “auto adjust” your image changing the contrast levels to see faint objects.

Here's the same image that's been adjusted using MicroObservatoryImage (MOImage).

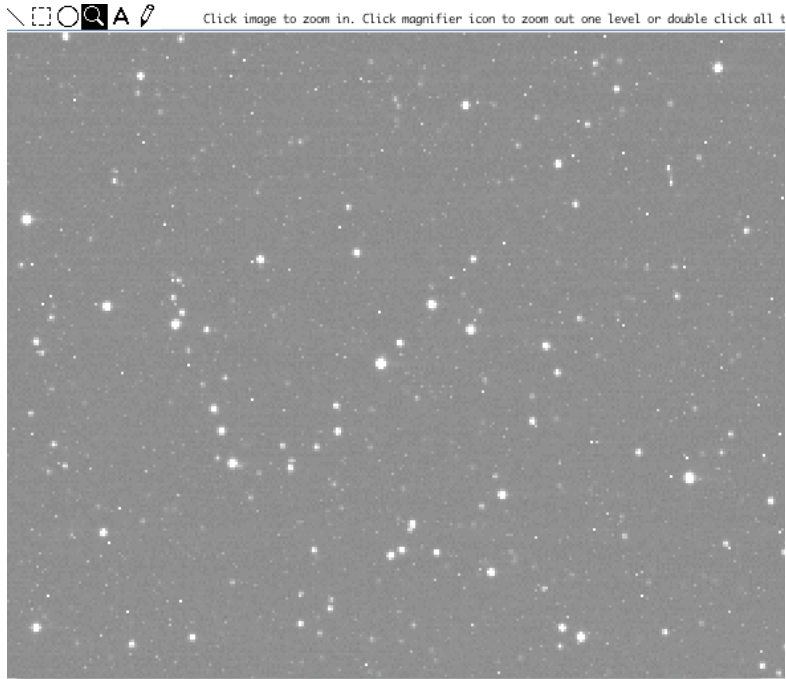


Which star is HATP-10?



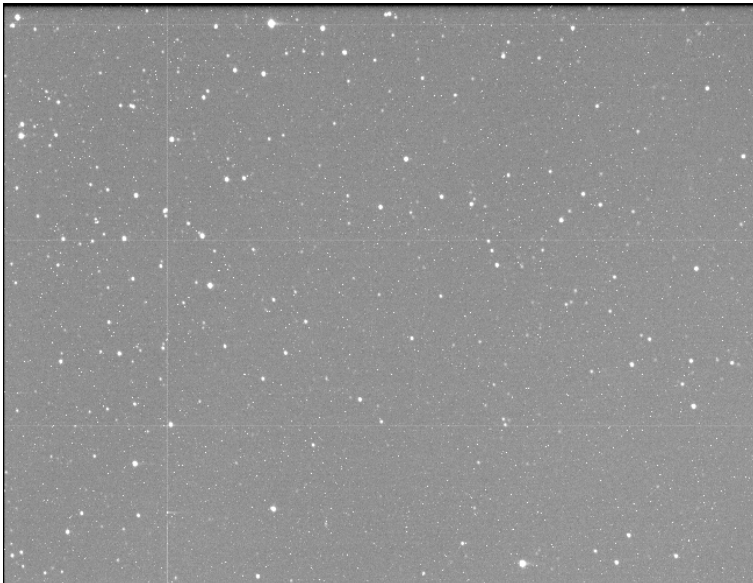
Here's a hint. Look in the red circle. Can you find HATP10 now?

Sometimes it helps to magnify your view to find a star. Can you find HATP-10 now?

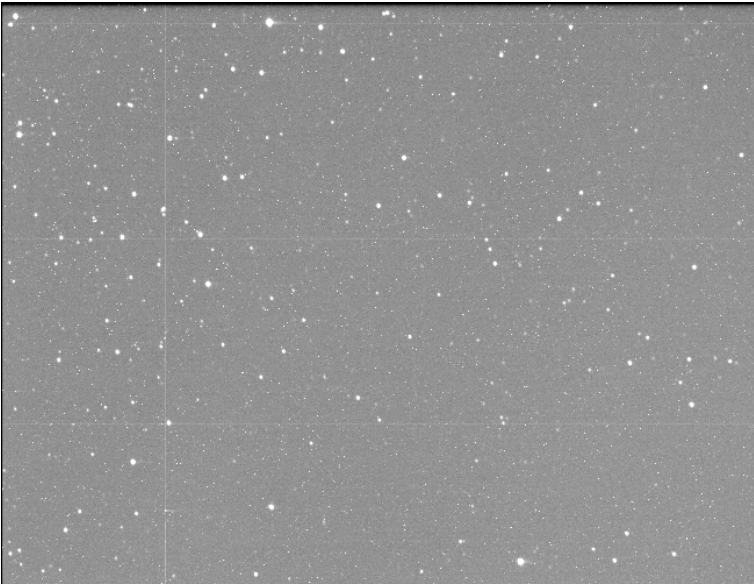


Ready for a new challenge. Compare this image with the star chart.

Which star is HATP-10?

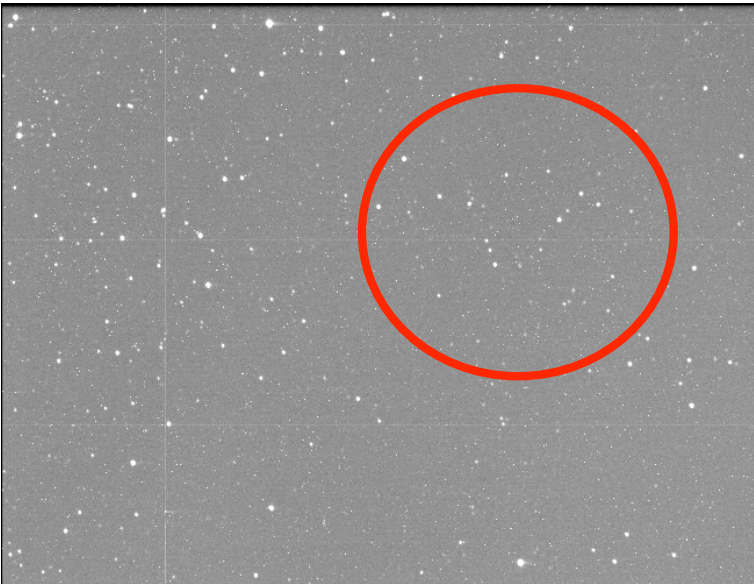


Here's a hint – look carefully all around the image – stars in an image may not always be in the exact location as in the star chart.



Now can you find HATP-10?

Look closely in the circle

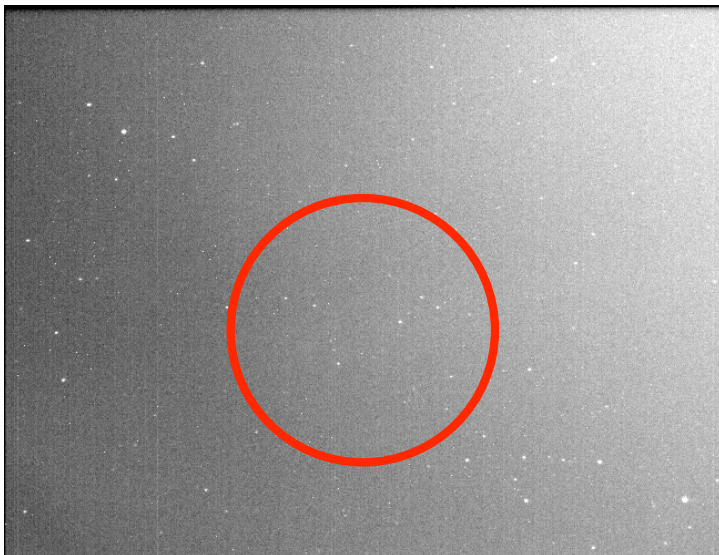


Here's a more challenging image of HATP-10. Compare this image with the star chart.



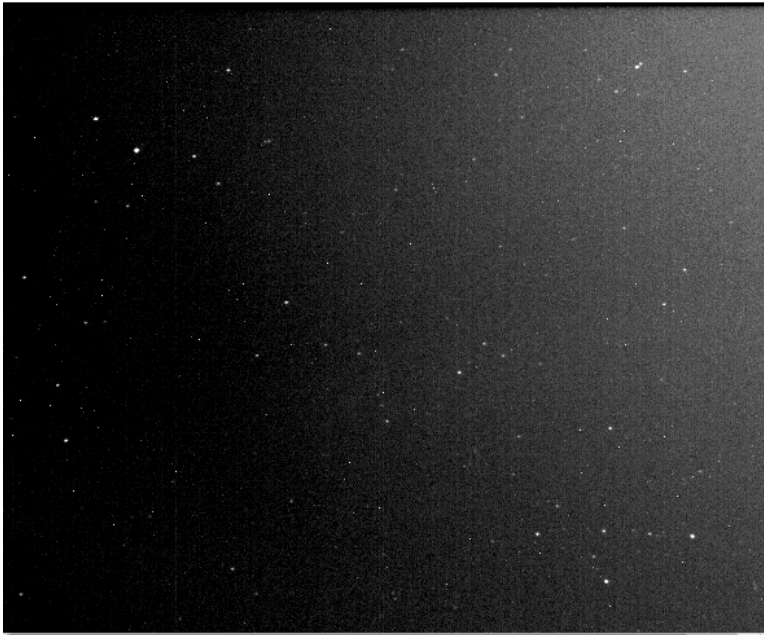
Which star is HATP-10?

Remember that you can often find a target star even on a cloudy night. Try looking in the circle



Which star is HATP-10?

Sometimes you can adjust the contrast on cloudy skies to help see faint stars.



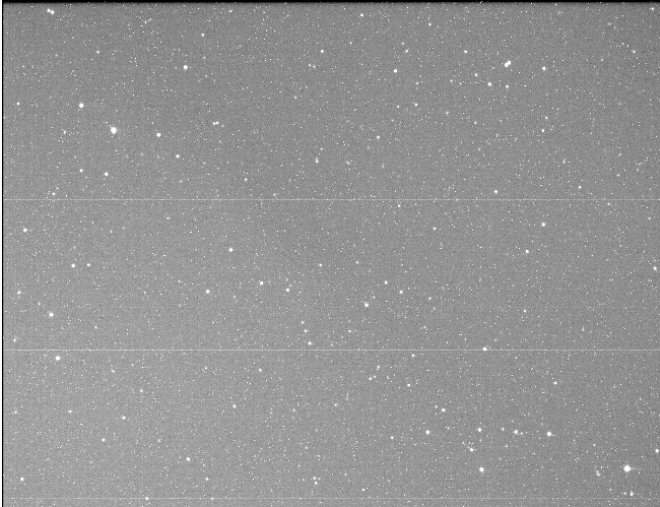
Which star is HATP-10?

Here's your final challenge for HATP-10. Compare this image with the star chart.



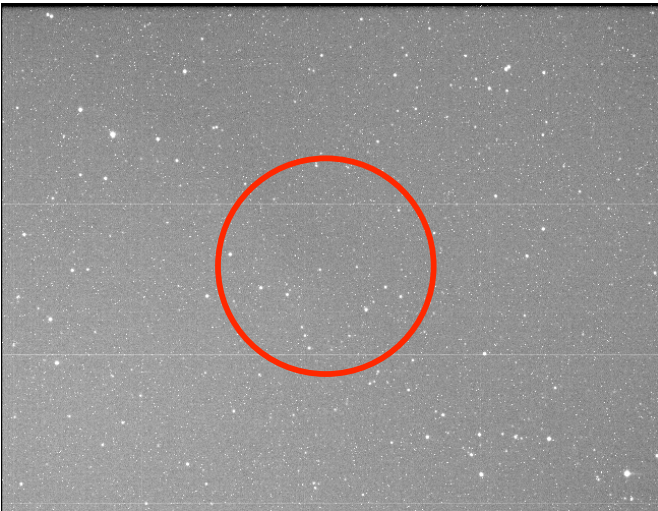
Which star is HATP-10?

This is a very dark image and it can be difficult to see faint stars. Always auto adjust an image that is dark, it really helps in star finding.



Which star is HATP-10?

Sometimes horizontal lines run through an image but if you look carefully they usually don't run through a target star.

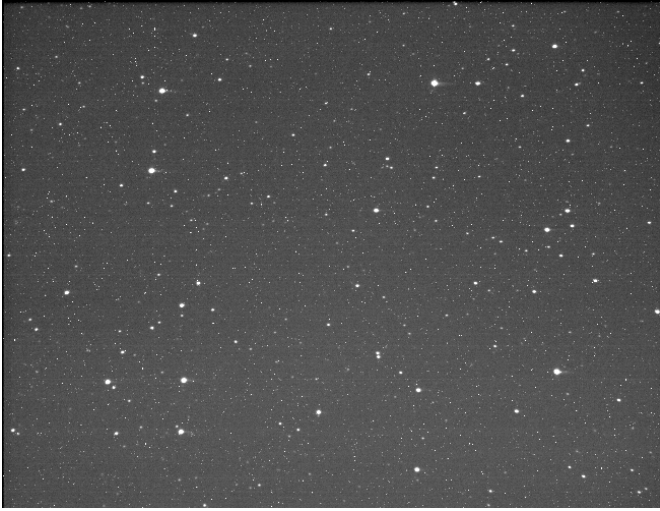


Which star is HATP-10?

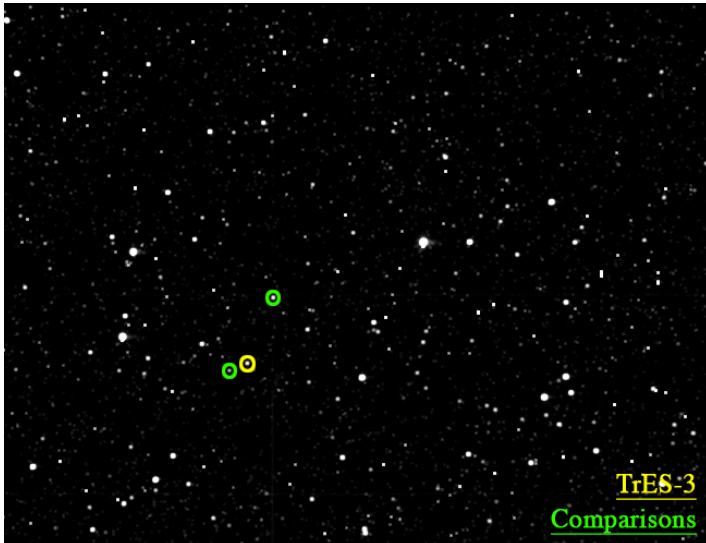
GREAT JOB – now here are two challenges...

Challenge #1

Can you find TrES-3 in this image?



Compare this image with the star chart.



Challenge #2

Can you find COROT-2 in this image?

